



NetApp™
Go further, faster



Software

NetApp System Manager

Fast, efficient, out-of-the-box management
of NetApp storage systems

KEY BENEFITS

Simplified management

Administrators can now manage NetApp® systems in a fast, efficient, and familiar Windows® environment.

Fast, simple setup

Start serving data minutes after installation.

Powerful administrative capabilities

Easily configure and provision storage for file sharing and application workloads.

THE CHALLENGE

Given the rapid increases in the amount of data in Windows and UNIX® environments, networked storage is increasingly popular as a storage solution. However, when networked storage is integrated into these environments, administrators often need to develop new expertise in managing the storage system, which increases operational complexity and overhead.

THE SOLUTION

NetApp System Manager is a simple Windows-based tool that enables administrators to easily set up and manage NetApp storage systems.

System Manager provides recommendations based on NetApp best practices for common storage management tasks and workflows, to save you time and prevent configuration errors.

Fast, simple setup

With System Manager, you can rapidly deploy NetApp storage systems, typically within minutes after installation.

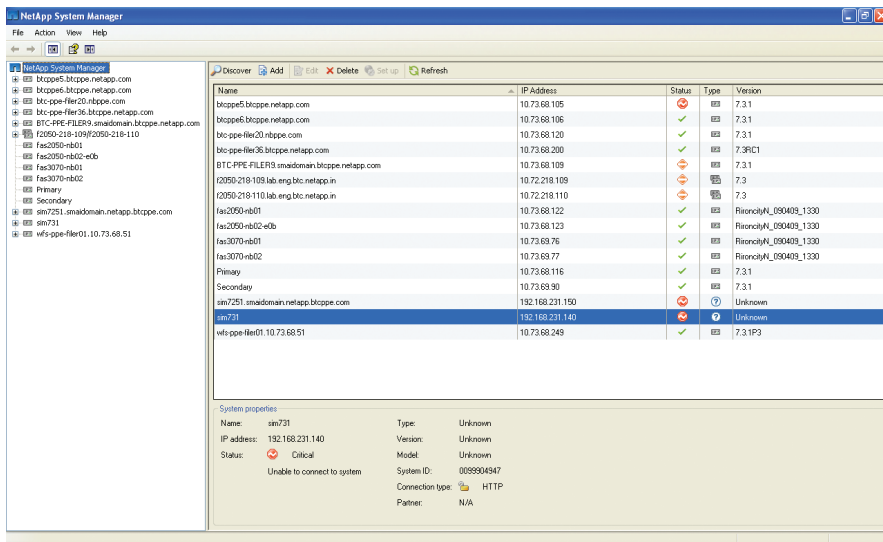
Simplified management

System Manager runs on Windows systems and utilizes the familiar Microsoft® Management Console (MMC) interface. This tool provides simple, workflow-based wizards to automate the most common device management tasks.

With System Manager, administrators can quickly set up and efficiently manage NetApp SAN and NAS systems using the expertise they already have.

Powerful administrative capabilities

- System Manager lets administrators easily control the powerful capabilities of NetApp storage systems: Manage disks, pooled storage, shares/exports, Snapshot™ copies, and network configuration.
- Provision storage for SAN (iSCSI/FCP) and NAS (CIFS/NFS), for both physical and virtualized server environments.
- Leverage space-efficiency features such as thin provisioning and deduplication.
- Get real-time views of system performance.



System Manager main console.



Simple wizard-based workflows.

NetApp creates innovative storage and data management solutions that accelerate business breakthroughs and deliver outstanding cost efficiency. Discover our passion for helping companies around the world go further, faster at www.netapp.com.

© 2009 NetApp, Inc. All rights reserved. No portions of this document may be reproduced without prior written consent of NetApp, Inc. Specifications are subject to change without notice. NetApp, the NetApp logo, Go further, faster, and Snapshot are trademarks or registered trademarks of NetApp, Inc. in the United States and/or other countries. UNIX is a registered trademark of The Open Group. Windows and Microsoft are registered trademarks of Microsoft Corporation. All other brands or products are trademarks or registered trademarks of their respective holders and should be treated as such. DS-2932-0509